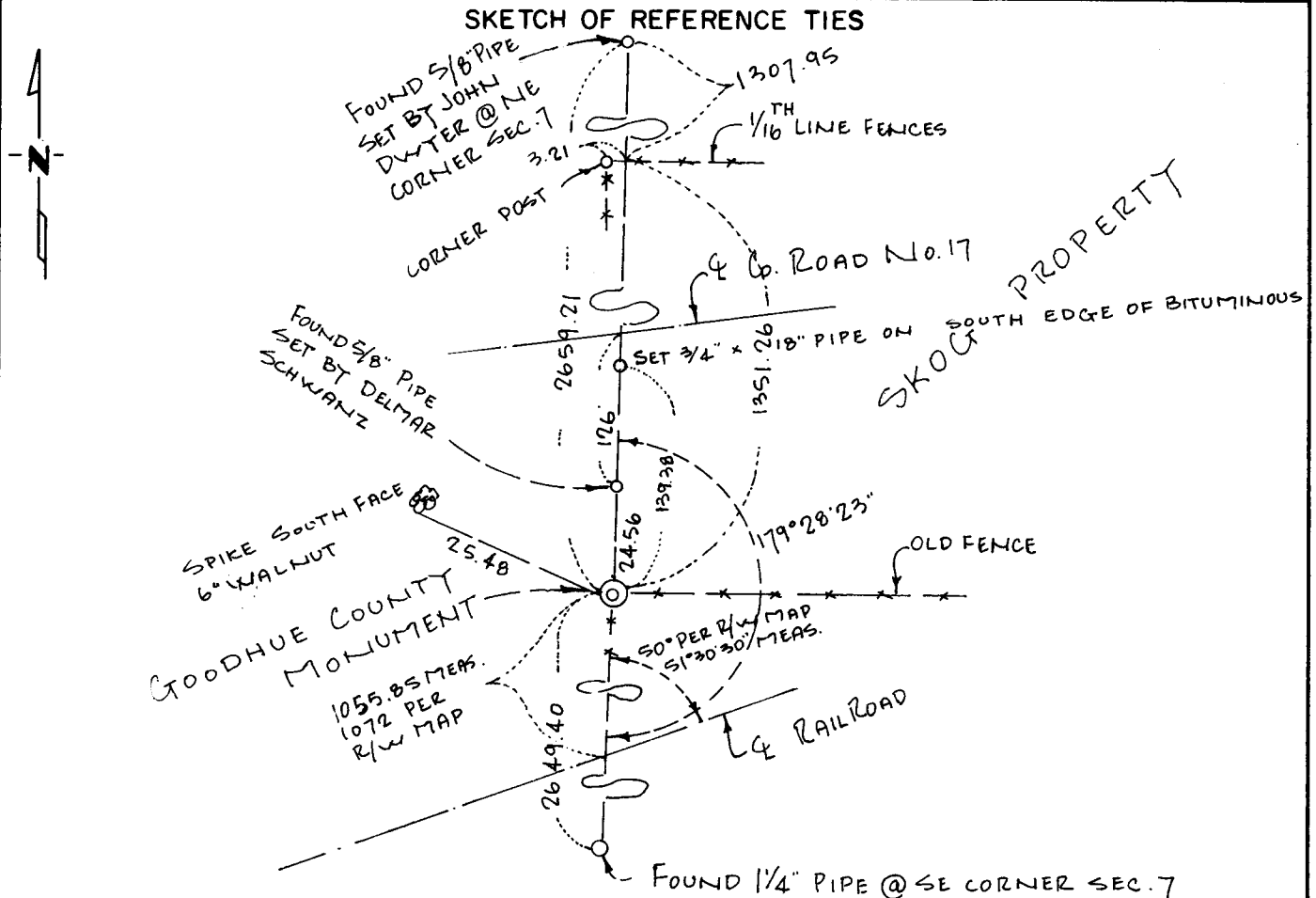


# CERTIFICATE OF LOCATION OF GOVERNMENT CORNER

EAST 1/4<sup>TH</sup> Corner of Section 7, Township 112, Range 17, 5 P.M.  
STATE OF MINNESOTA, County of GOODHUE

At the corner location shown on the sketch:

- ☒ On JUNE 25, 1981 found a 5/8" PIPE 24.56' NORTH OF 1/2" PEROD  
DATE
- ☐ left monument as found, ☐ lowered monument, ☒ removed monument (explain)
- ☒ On 14 JULY 1981 placed an ALUMINUM GOODHUE COUNTY MONUMENT  
DATE  
IN SAME POSITION AS FOUND PEROD.



Statement of evidence relative to this corner location is on back of page.

I hereby certify that this document and the data contained herein was prepared by me or under my direct supervision.

David A. Johnson 15 JULY 1981  
SIGNATURE DATE

Registration No. 12788

☒ Land Surveyor, ☐ Professional Engineer

☒ County Surveyor, ☐ County Engineer

County Recorder  
OFFICE OF THE REGISTER OF DEEDS  
County of Goodhue

I hereby certify that this document was filed in the Reg. of Deeds office at 10:35 A.M. on the 15 day of July A.D., 1981.

County Recorder  
Craig Anderson  
By Deborah Anderson, Deputy  
DOCUMENT NO. \_\_\_\_\_